

# IRONWOOD SUBDIVISION A PLANNED UNIT DEVELOPMENT PHASE 5

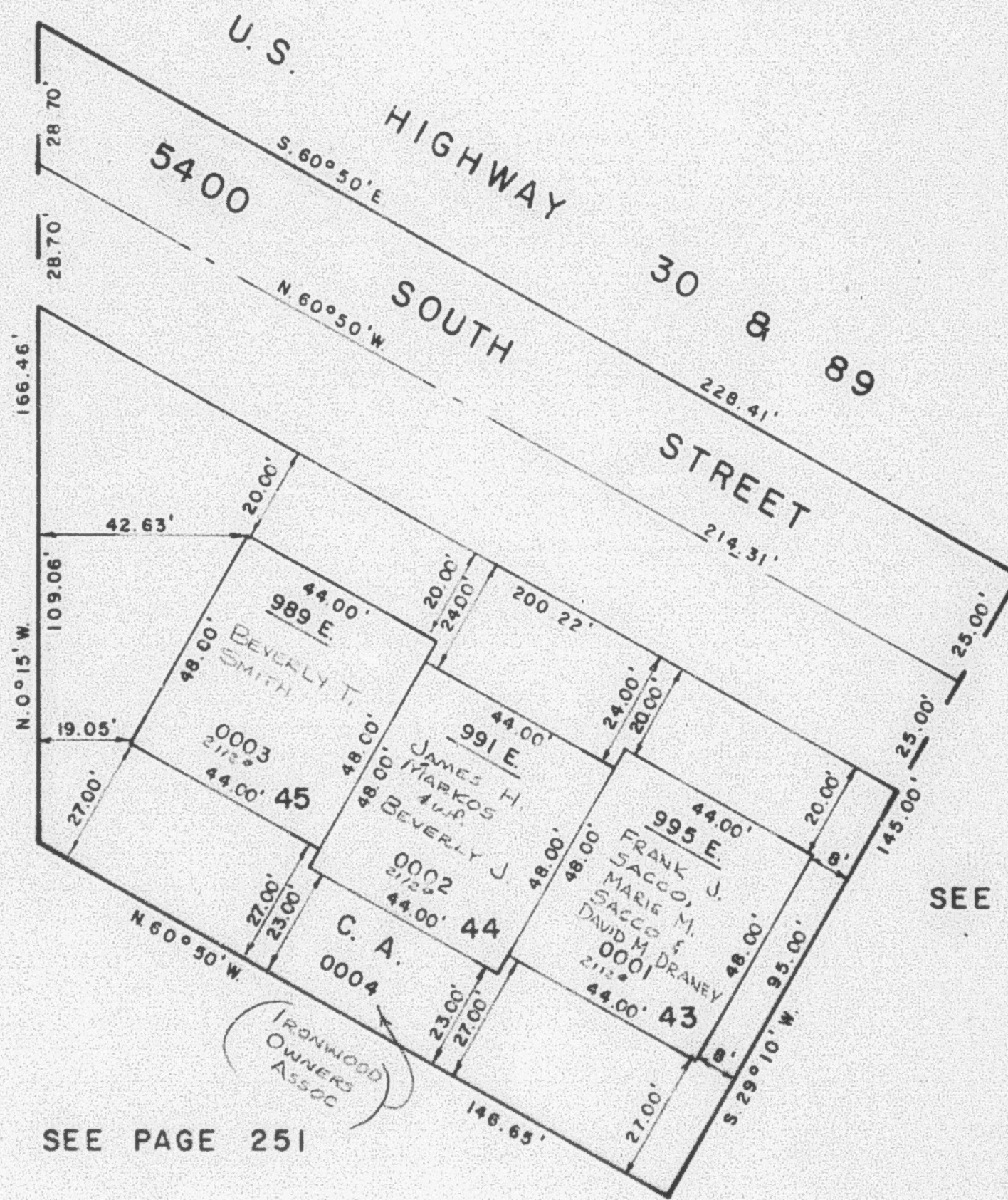
TAXING UNIT: 27

IN SOUTH OGDEN CITY  
SCALE 1" = 30'

PREFIX: 07-278

SEE PAGE 47

SEE PAGE 153



SEE PAGE 251

SEE PAGE 251